

**FRANKE**

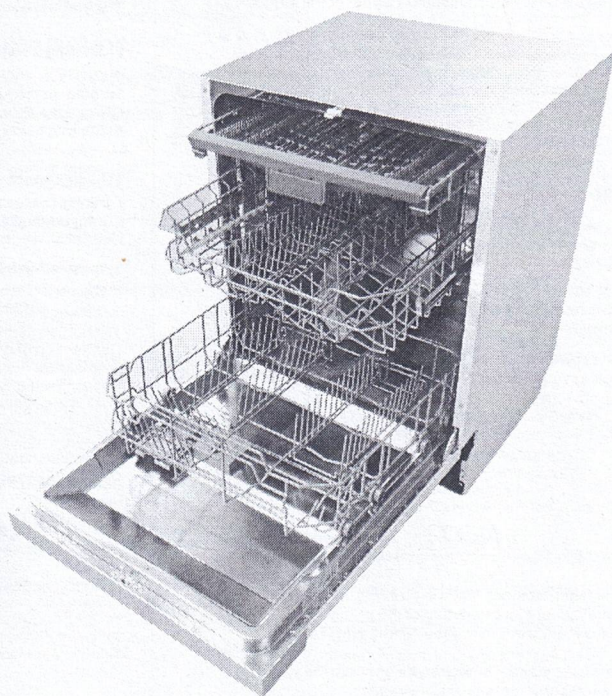
---

# Dishwasher

## *Instruction Manual*

FRDW60SI

- 14 place settings
- Alt function





## 2. Quick Operation Guide

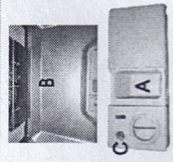
For detailed operating method read the corresponding content on the instruction manual.

Switch on the appliance

Open the door, press the On/Off button to switch on the appliance.

Fill the detergent dispenser

**Compartment A:**  
For each wash cycle.  
**Compartment B:**  
For programs with pre-wash only.  
(Follow the user instructions)



Check the rinse aid level

**Mechanical Indicator C:**  
Electric indicator on control panel (if provided).

Load the baskets

Scrape off any large food particles. Soften remnants of burnt food in pans, then load the baskets. Refer to the dishwasher loading instructions.

Select a program

Press the Program Button until the selected program lights up.  
( See the section entitled "Operation Instruction" )

Running the dishwasher

Turn on the water tap and press the Start/Pause button. The machine will start working.

• Changing the program

- 1. A running cycle can only be modified if it has been running for a short time. Otherwise the detergent dispenser may already have been released and the water already drained. If this is the case, the detergent dispenser must be refilled.
- 2. Press the Start/Pause button to stop the machine. Press the Program button more than 3 seconds. The machine will be in standby state, then you can change the program to the desired cycle setting

• Add forgotten dishes in the dishwasher.

- 1. Press the Start/Pause Button to stop the washing.
- 2. Open the door a little.
- 3. After the spray arms stop working, you can open the door completely.
- 4. Add forgotten dishes.
- 5. Close the door.
- 6. Press the Start/Pause Button, the dishwasher will start running again.

### ⚠ WARNING!

Open the door carefully.  
Hot steam may escape  
when the door is opened!

• If the appliance is switched off during a wash cycle.

- If the appliance is switched off during a wash cycle, when switched on again cycle and operate the dishwasher according to the original Power-on state.

Switch off the appliance

When the working cycle is finished, the buzzer of the dishwasher will sound 8 times, then stop. Turn off the appliance using the On/Off Button.  
Since the appliance is standing by, it will power off automatically after 30 minutes without any operation.

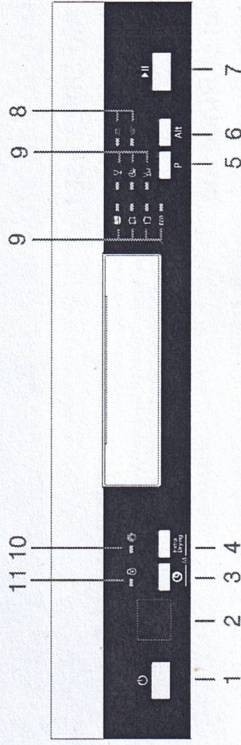
Turn off the water tap, unload the baskets

Warning: wait a few minutes (about 15 minutes) before unloading the dishwasher to avoid scald, as the dishes and utensils are still hot and more susceptible to break.  
They could also dry better. Unload the appliance, starting from the lower basket.

## 2. Operation Instruction

**⚠ IMPORTANT** To get the best performance from your dishwasher, read all operating instructions before using it for the first time.

### Control Panel

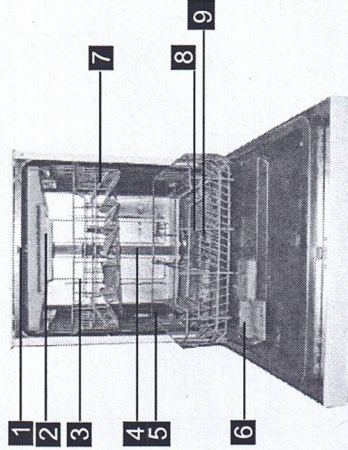


1. On/Off Button: to switch On/Off the appliance.
2. Display screen: to show the reminding time and the state (running state, delay time, error codes etc)
3. Delay Button : Press the button to add the delay time.
4. Extra Drying button : To Press the button to select Extra Drying function (Does not apply to Auto and Rapid).
5. Program Button : To Press the button to select appropriate Program.
6. Alt Button: Dual zone wash function, press the button to select either upper basket or lower basket loaded, and the response indicators will light on.
7. Start /Pause button: To start the selected washing program or pause the washing program when the machine is working.
8. Alt function indicator:
9. Program indicators: To show which program you have choosed.
10. Extra Drying function indicator:
11. Child lock function indicator:

**Attention:**  
Child lock function: press two buttons (⊕ + Extra) simultaneously to lock the program.

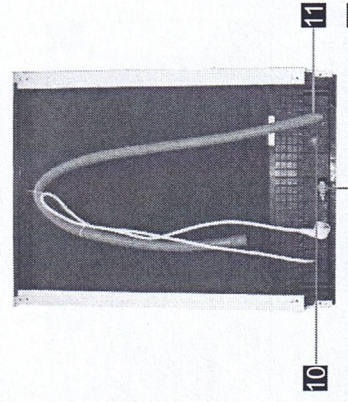
## Dishwasher Features

Front view



- 1 Top spray arm
- 2 Cutlery rack
- 3 Upper basket
- 4 Inner pipe
- 5 Lower basket
- 6 Dispenser
- 7 Cup shelf
- 8 Spray arms
- 9 Filter assembly

Back View



- 10 Inlet pipe connector
- 11 Drain pipe
- 12 Adjuster



## 4. Prior to using for the first time

Before using your dishwasher for the first time:

- A** Fill the rinse aid dispenser
- B** Fill in detergent

## A. Filling the Rinse Aid Dispenser

### Rinse Aid Dispenser

The rinse aid is released during the final rinse to prevent water from forming droplets on your dishes, which can leave spots and streaks. It also improves drying by allowing water to roll off the dishes. Your dishwasher is designed to use liquid rinse aids. The rinse aid dispenser is located inside, on the door and next to the detergent dispenser. To fill the dispenser, open the cap and pour the rinse aid into the dispenser until the level indicator turns completely black. The volume of the rinse aid container is about 110ml.

### Function of Rinse Aid

Rinse aid is automatically added during the last rinse, ensuring thorough rinsing, a spot and streak free drying.

### Warning!

Only use branded rinse aid for dishwasher. Never fill the rinse aid dispenser with any other substances (e.g. Dishwasher cleaning agent, liquid detergent). This would damage the appliance.

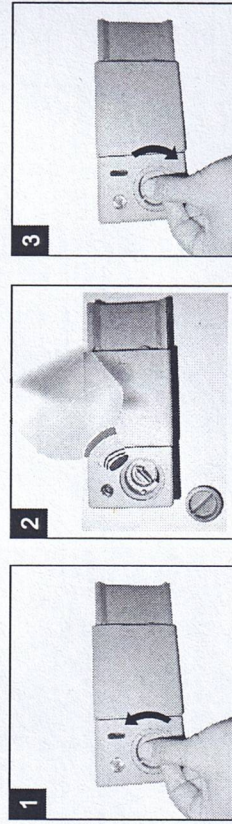
## When to Refill the Rinse Aid Dispenser

Unless the rinse-aid warning light on the control panel is on, you can always estimate the amount from the color of the optical level indicator "C" located next to the cap. When the rinse-aid container is full, the indicator will be fully dark. The size of the dark dot decreases as the rinse-aid diminishes. You should never let the rinse aid level be less than 1/4 full.

As the rinse aid diminishes, the size of the black dot on the rinse aid level indicator changes, as illustrated below.

- 3/4 full
- ◐ 1/2 full
- ◑ 1/4 full - Should refill to eliminate spotting
- Empty

## How to fill the Rinse Aid Dispenser



- 1** To open the dispenser, turn the cap to the "open" (left) arrow and lift it out.
- 2** Carefully pour in the rinse-aid into its dispenser, whilst avoiding it to overflow.
- 3** Replace the cap by inserting it aligned with "open" arrow and turning it to the closed (right) arrow.

Be careful not to overflow the dispenser, because this could cause over sudsing. Wipe away any spills with a damp cloth. Don't forget to replace the cap before you close dishwasher door.

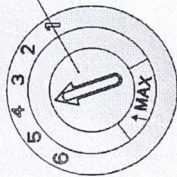
### Attention!

Clean up any rinse aid spill during filling with an absorbent cloth to avoid excess foaming during the next wash.

**NOTE:** Clean up any rinse aid spilled while during filling with an absorbent cloth to avoid excessive foaming during the next wash. Don't forget to replace the cap before you close dishwasher door.

## Adjusting Rinse Aid Dispenser

Adjust lever  
(Rinse)



The rinse aid dispenser has six or four settings. Always start with the dispenser set on "4". If spots and poor drying are a problem, increase the amount of rinse aid dispensed by removing the dispenser lid and rotating the dial to "5". If the dishes still are not drying properly or are show spots, adjust the dial to the next higher lever until your dishes are spot-free. The recommended setting is "4". (Factory value is "4".)

### NOTE:

Increase the dose if there are drops of water or lime spots on the dishes after washing. Reduce it if there are sticky whitish stains on your dishes or a bluish film on glassware or knife blades.

## B. Detergent

Detergents have chemical ingredients that are necessary to remove dirt, crush dirt and transport it out of the dishwasher. Most of the commercial quality detergents are suitable for this purpose.

## Detergents

There are 3 sorts of detergents

1. With phosphate and with chlorine
2. With phosphate and without chlorine
3. Without phosphate and without chlorine

Normally new pulverised detergent is without phosphate. Thus the water softener function of phosphate is not given. If detergents without phosphate are used in the case of hard water often white spots appear on dishes and glasses. In this case please add more detergent to reach better results. Detergents without chlorine do only bleach a little. Strong and coloured spots will not be removed completely. In this case please choose a program with a higher temperature.

## Concentrated Detergent

Based on their chemical composition, detergents can be split in two basic types:

- Conventional, alkaline detergents with caustic components
- Low alkaline concentrated detergents with natural enzymes

The use of "normal" washing programs in combination with concentrated detergents reduces pollution and is good for your dishes; these wash programs are specifically matched to the dirt-dissolving properties of the enzymes of the concentrated detergent. For this reason "normal" wash programs in which concentrated detergents are used can achieve the same results that can otherwise only be achieved using "intensive" programs.

## Detergent Tablets

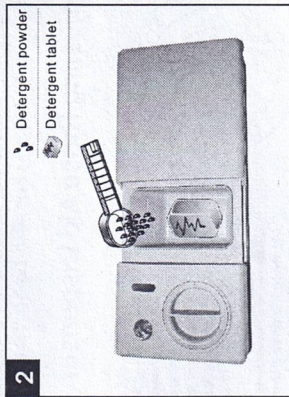
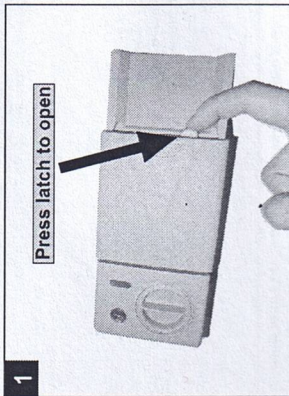
Detergent tablets of different brands dissolve at different speeds. For this reason some detergent tablets cannot dissolve and develop their full cleaning power during short programs. Therefore please use long programs when using detergent tablets, to ensure the complete removal of detergent residuals.

## Detergent Dispenser

The dispenser must be refilled before the start of each wash cycle following the instructions provided in the wash cycle table. Your dishwasher uses less detergent and rinse aid than conventional dishwasher. Generally, only one tablespoon of detergent is needed for a normal wash load. More heavily soiled items need more detergent. Always add the detergent just before starting the dishwasher, otherwise it could get damp and will not dissolve properly.



## Adding detergent to dispenser



## Fill in Detergent

Fill the detergent dispenser with detergent. The marking indicates the dosing levels, as illustrated on the right:

- A** The place of main wash cycle detergent placed.
- B** The place of pre-wash cycle detergent placed.

Please observe the manufacturers dosing and storage Recommendations as stated on the detergent packaging.

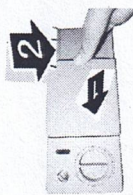
Close the lid and press until it locks in place.

If the dishes are heavily soiled, place an additional detergent dose in the pre-wash detergent chamber. This detergent will take effect during the pre-wash phase.

## NOTE:

- You find information about the amount of detergent for the single programme on the last page.
- Please aware, that according to the level soiling and the specific hardness of water differences are possible.
- Please observe the manufacturer's recommendations on the detergent packaging.

## Close the Detergent compartment



If your dishes are only moderately dirty, you may be able to use less detergent than recommended.

- compartment.  
Press down the lid (1) until it clicks shut (2).
- If you are using detergent in tablet form, read the manufacturer recommendations on the packaging in order to determine where the tablets should be placed inside the dishwasher (e.g. in cutlery basket, detergent compartment, etc.).  
Make sure that the lid on the detergent compartment is closed, even if you are using tablets.

## 5. Loading the Dishwasher Baskets

### Recommendation

- Consider buying utensils which are identified as dishwasher-proof.
- Use a mild detergent that is described as 'kind to dishes'. If necessary, seek further information from the detergent manufacturers.
- For particular items, select a program with as low temperature as possible.
- To prevent damage, do not take glass and cutlery out of the dishwasher immediately after the program has ended.

### Suitability of use in the dishwasher

#### Not suitable for use

- Cutlery with wooden, horn china or mother-of-pearl handles.
- Plastic items that are not heat resistant.
- Older cutlery with glued parts that are not temperature resistant.
- Bonded cutlery items or dishes.
- Pewter or cooper items.
- Crystal glass.
- Steel items subject to rusting.
- Wooden platters.
- Items made from synthetic fibres.

#### Limited suitability

- Some types of glasses can become dull after a large number of washes.
- Silver and aluminium parts have a tendency to discolour during washing.
- Glazed patterns may fade if machine washed frequently.

## Attention before or after loading the Dishwasher Baskets

(For the best performance of the dishwasher, follow these loading guidelines. Features and appearance of baskets and cutlery baskets may vary from your model.)

Scrape off any large food particles. Soften remnants of burnt food in pans. It is not necessary to rinse the dishes under running water.

Place objects in the dishwasher in following way:

1. Items such as cups, glasses, pots/pans, etc. are faced downwards.
2. Curved items, or ones with recesses, should be loaded aslant so that water can run off.
3. All utensils are stacked securely and can not tip over.
4. All utensils are placed in the way that the spray arms can rotate freely during washing.

**NOTE:** Very small items should not be washed in the dishwasher as they could easily fall out of the basket.

- Load hollow items such as cups, glasses, pans etc. With the opening facing downwards so that water cannot collect in the container or a deep base.
- Dishes and items of cutlery must not lie inside one another, or cover each other.
- To avoid damage to glasses, they must not be touched.
- Load large items which are most difficult to clean into the lower basket.
- The upper basket is designed to hold more delicate and lighter dishware such as glasses, coffee and tea cups.
- Long bladed knives stored in an upright position are a potential hazard!
- Long and/or sharp items of cutlery such as carving knives must be positioned horizontally in the upper basket
- Please do not overload your dishwasher. This is important for good results and for reasonable consumption of energy.

## Removing the Dishes

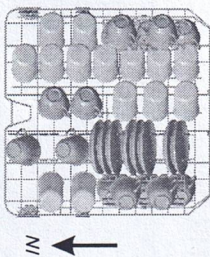
To prevent water dripping from the upper basket into the lower basket, we recommend that you empty the lower basket first and then the upper basket.



## The Method Loading Normal Dishware

### Loading the Upper Basket

The upper basket is designed to hold more delicate and lighter dishware such as glasses, coffee and tea cups and saucers, as well as plates, small bowls and shallow pans (as long as they are not too dirty). Position the dishes and cookware so that they will not get moved by the spray of water.



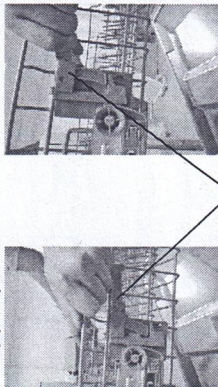
Please be reminded that:

- Pots, serving bowls, etc, must always be placed top down.
- Deep pots should be slanted to allow water to flow out.
- The Bottom Basket features folding spikes so that larger or more pots and pans can be loaded.

### Adjusting the Upper Basket

The height of the upper basket can be adjusted in order to create more space for large utensils both for the upper /lower basket. The height of the upper basket can be adjusted by lift up the basket for the upper position, and up press the handle to lower the upper basket, see the picture below.

Lift the basket for upper position  
Up press the handle to lower the basket



Adjust handle

### Cutlery Basket

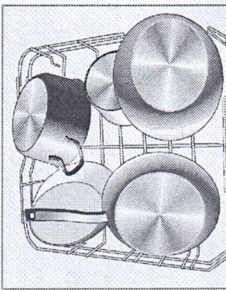
Cutlery should be placed into the cutlery rack separately from each other in the appropriate positions, and do make sure the utensils do not nest together, this may cause bad performance.

For a top quality cleaning, place the silverware in the basket making sure that:

- They do not nest together.
- Silverware is placed with the male face up.
- Long utensils in the middle.

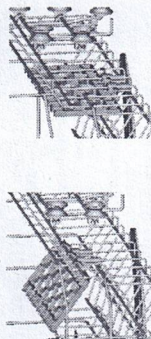
### Loading the Lower Basket

We suggest that you place large items and the most difficult to clean items are to be placed into the lower basket, such as pots, pans, lids, serving dishes and bowls, as shown in the figure below. It is preferable to place serving dishes and lids on the side of the racks in order to avoid blocking the rotation of the top spray arm.



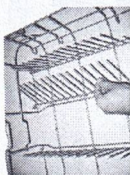
### Folding back the cup shelves

For better stacking of pots and pans, the spikes can be folded down as show in the picture right.



### Folding Spikes of Lower Basket

For better stacking of pots and pans, the spikes can be folded down as show in the picture right.



## 6. Starting a washing program

### Wash Cycle Table

▲ NOTE: (★) Means: need to fill rinse aid into the Rinse-Aid Dispenser.

Program	Cycle Selection Information	Description of Cycle	Detergent pre/main	Running time(min)	Energy (kwh)	Water (L)	Rinse Aid
AUTO	For all soiled loads, such as pots, pans, casserole dishes and dishes that have been sitting with dried food on them for a while.	Prewash (45°C) Autowash (45~55°C) Rinse Rinse (65°C) Drying	5/27.5g (Or all in 1)	150	0.9-1.3	11-15	★
Intensive	For heaviest soiled crockery, soiled pots, pans, dishes etc with dried on soiling.	Prewash (50°C) Wash (60°C) Rinse Rinse (65°C) Rinse (65°C) Drying	5/27.5g (Or all in 1)	170	1.5	17.5	★
Heavy	For normally soiled loads, such as pots, plates glasses and lightly soiled pans.	Prewash(45°C) Wash (55°C) Rinse Rinse (65°C) Drying	5/27.5g (Or all in 1)	160	1.3	13.5	★
ECO	This is standard programme, it is suitable to clean normally soiled tableware and it is the most efficient programme in terms of its combined energy and water consumption for that type of tableware.	Pre-wash Wash (45°C) Rinse Rinse (48°C) Drying	5/27.5g (Or all in 1)	170	0.71	12.5	★
Glass	For lightly soiled crockery and glass.	Pre-wash Wash(42°C) Rinse Rinse (60°C) Drying	5/27.5g (Or all in 1)	125	0.8	13	★
90Min	For lightly soiled loads that do not need excellent drying efficiency.	Wash(65°C) Rinse Rinse (65°C) Drying	25g (Or all in 1)	90	1.2	11.5	★
Rapid	A shorter wash for lightly soiled loads and quick wash.	Wash (40°C) Rinse Rinse (45°C)	25g	30	0.6	11.5	/

▲ NOTE:

\*AS/NZS 2007.1 : This program is the test cycle. The information for comparability test in accordance with AS/NZS 2007.1 , as follows:

- Capacity: 14 settings
- Position Upper basket: upper wheels on rails
- Rinse aid setting: 6
- P: 0.49W; P.c: 0.45W

### Turning On the Appliance

Starting a cycle wash

- 1 Draw out the lower and upper basket, load the dishes and push them back. It is recommended to load the lower basket first, then the upper one (see the section entitled "Loading the Dishwasher").
- 2 Pour in the detergent (see the section entitled Detergent and Rinse Aid). Insert the plug into the socket. The power supply is 220-240 VAC /50 HZ, the specification of the socket is 10A 250VAC. Make sure that the water supply is turned on to full pressure.
- 3 Close the door, press the On/Off button to switch on the machine.
- 4 Press the program Button, the wash program will be changed as follows direction: ECO->Glass->90Min->Rapid->Auto->Intensive->Heavy->ECO.
- 5 If a program is selected, the responding light will be on. Then press the Start/Pause button, the dishwasher begins to start. If you want to improve the drying efficiency, you can press the Option button to select extra drying function before the dishwasher begins to start. (Exclude Rapid and Soak)



**NOTE:**

When you press the Start/Pause button to pause during washing, the LED display “ ” will stop blinking and the dishwasher will mooring every minute unless you press the Start/Pause button to start.

## Change the Program

**Premise:**

- 1 A cycle that is underway can only be modified if it has only been running for a short time. Otherwise, the detergent may have already been released, and the appliance may have already drained the wash water. If this is the case, the detergent dispenser must be refilled (see the section entitled "Loading the Detergent").
- 2 Press the Start/Pause button, the machine will pause, press the program button more than 3s then you can change the program to the desired cycle setting (see the section entitled "Starting a wash cycle").

**NOTE:**

*If you open the door during a wash cycle, the machine will pause. The LED display “ ” will stop blinking and the buzzer will mooring every minute unless you close the door. After you close the door, the machine will keep on working after 10 seconds.*

## Forgot to Add a Dish

A forgotten dish can be added any time before the detergent cup opens.

- 1 Press the Start/Pause Button to stop the washing.
- 2 Open the door a little.
- 3 After the spray arms stop working, you can open the door completely.
- 4 Add forgotten dishes.
- 5 Close the door
- 6 Press the Start/Pause Button, the dishwasher will start running at once.

## At the End of the Wash Cycle

When the working cycle has finished, the buzzer of the dishwasher will sound for 8 seconds, then stop. Turn off the appliance using the ON/OFF button, shut off the water supply and open the door of the dishwasher. Wait for a few minutes before unloading the dishwasher to avoid handling the dishes and utensils while they are still hot and more susceptible to breakage. They will also dry better.

### ■ Switch Off the Dishwasher

The program light is on but is not blinking, only in this case the programme has ended.

1. Switch off the dishwasher by pressing the ON/OFF button.
2. Turn off the water tap!

### ■ Open the door carefully.

Hot dishes are sensitive to knocks. The dishes should therefore be allowed to cool down around 15 minutes before removing from the appliance.

Open the dishwasher's door, leave it ajar and wait a few minutes before removing the dishes. In this way they will be cooler and the drying will be improved.

### ■ Unloading the dishwasher

It is normal that the dishwasher is wet inside.

Empty the lower basket first and then the upper one. This will avoid water dripping from the upper Basket onto the dishes in the lower one.

**WARNING!**

It is dangerous to open the door when washing, because the hot water may scald you.